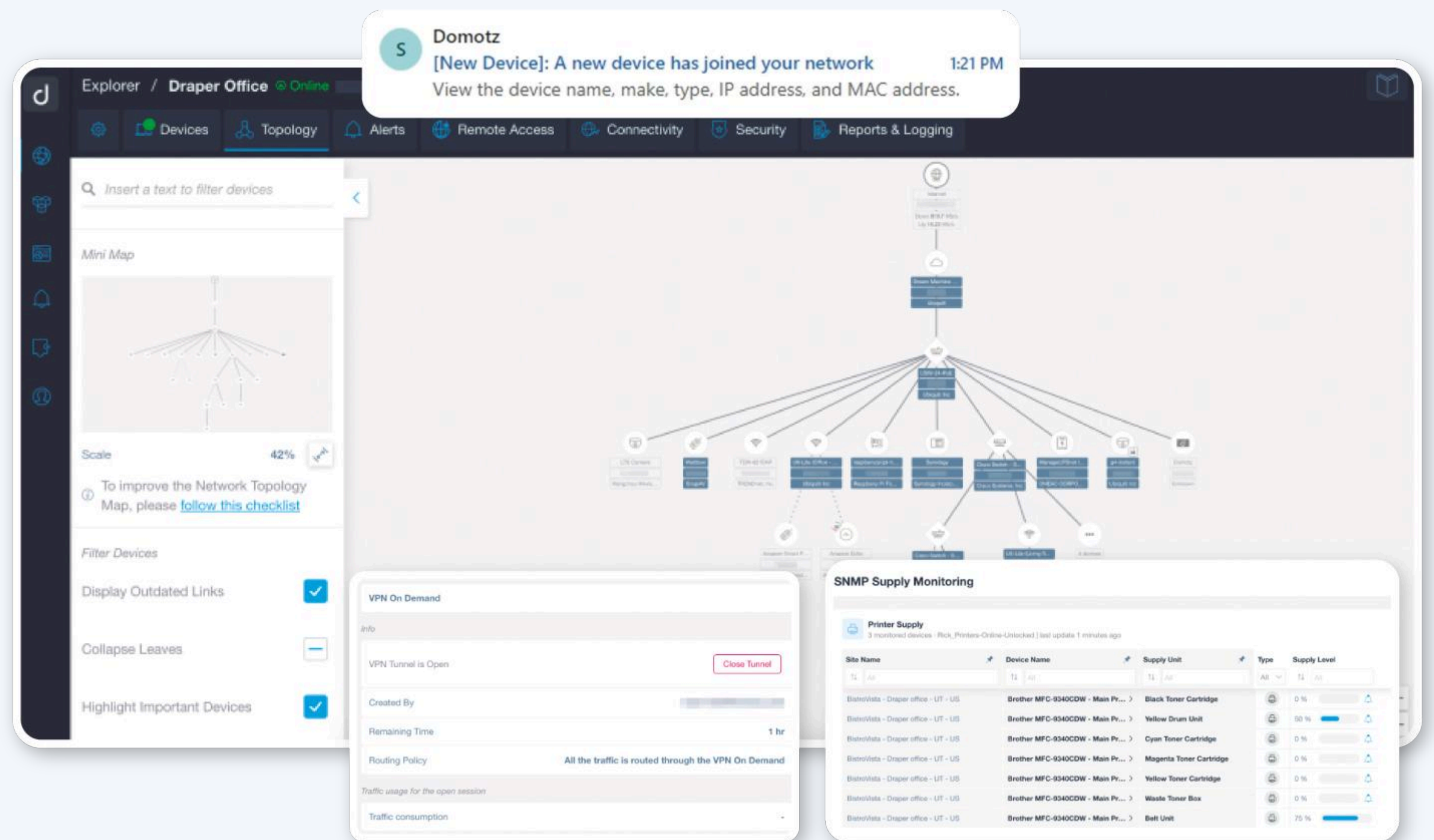


Command Your Network with Confidence

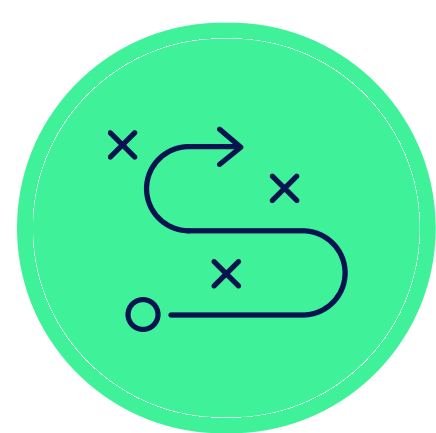
Networking assets are multiplying, making it harder for IT teams to maintain command.

Network blind spots create unforeseen issues with unpredictable impacts, forcing teams into a reactive, firefighting mode. This inefficiency consumes valuable resources—time, finances, and personnel. Delayed issue detection and resolution results in prolonged outages, decreased productivity, and frustration among employees.

Domotz gives you full command of your network.



Key Outcomes



Eliminate Blind Spots

Accurately identify assets and reveal blind spots to prevent unexpected issues.



Resolve Issues Quickly and Easily

Identify and resolve issues with ease, boosting productivity and confidence.



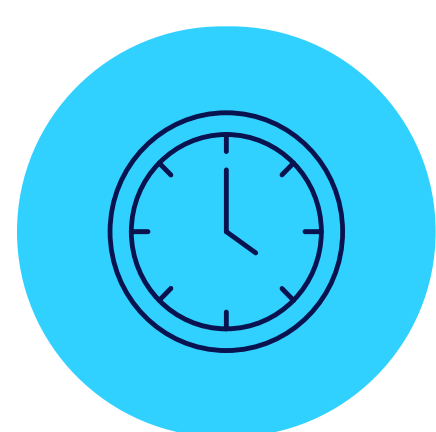
Manage Proactively

Optimize network performance and resolve issues before they escalate.



Improve Service Quality

Enhance performance, reduce disruptions, and increase productivity.



Save Time and Money

Simplify network management tasks and troubleshooting, reducing resource demands.

Domotz by the Numbers

40K+

Networks Managed

4M+

Devices Monitored & Managed

4.2K+

Customers

180+

Countries

Network Monitoring and Management, On Your Terms

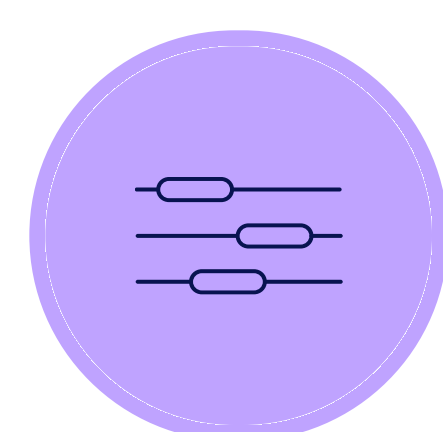
Take charge of your network with Domotz! Stop being at the mercy of poor network performance—take command with full-context visibility. Domotz reveals every asset and property, eliminating blind spots that lead to unexpected issues and outages. With a comprehensive suite of management tools, Domotz helps you exceed service expectations, resolve issues faster and more efficiently with fewer resources, and maintain a stable network while minimizing disruptions for those you support.

Key Features



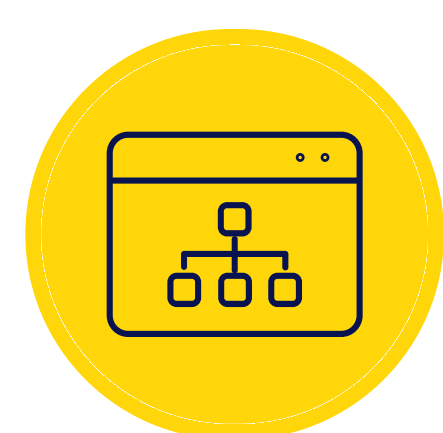
Device Identification

Layer-2 and 3 scanning provide more accurate device identification.



SNMP and Custom Scripting

Monitor SNMP metrics and write scripts to intake unlimited additional metrics from any IP device.



Network Topology

View an intuitive and interactive map of your IT infrastructure.



Real-Time Alerts

Notifications when new devices are discovered or when performance degradation occurs.



Read/Write Mode

Leverage scripting to automate tasks and create tailored workflows.



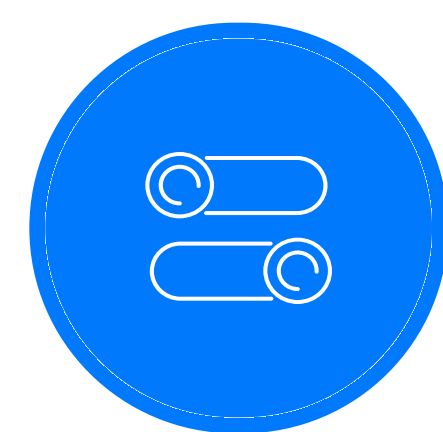
Configuration Management

Backup and restore your critical infrastructure devices.



Remote Access

Troubleshoot devices securely with a VPN on demand and more.

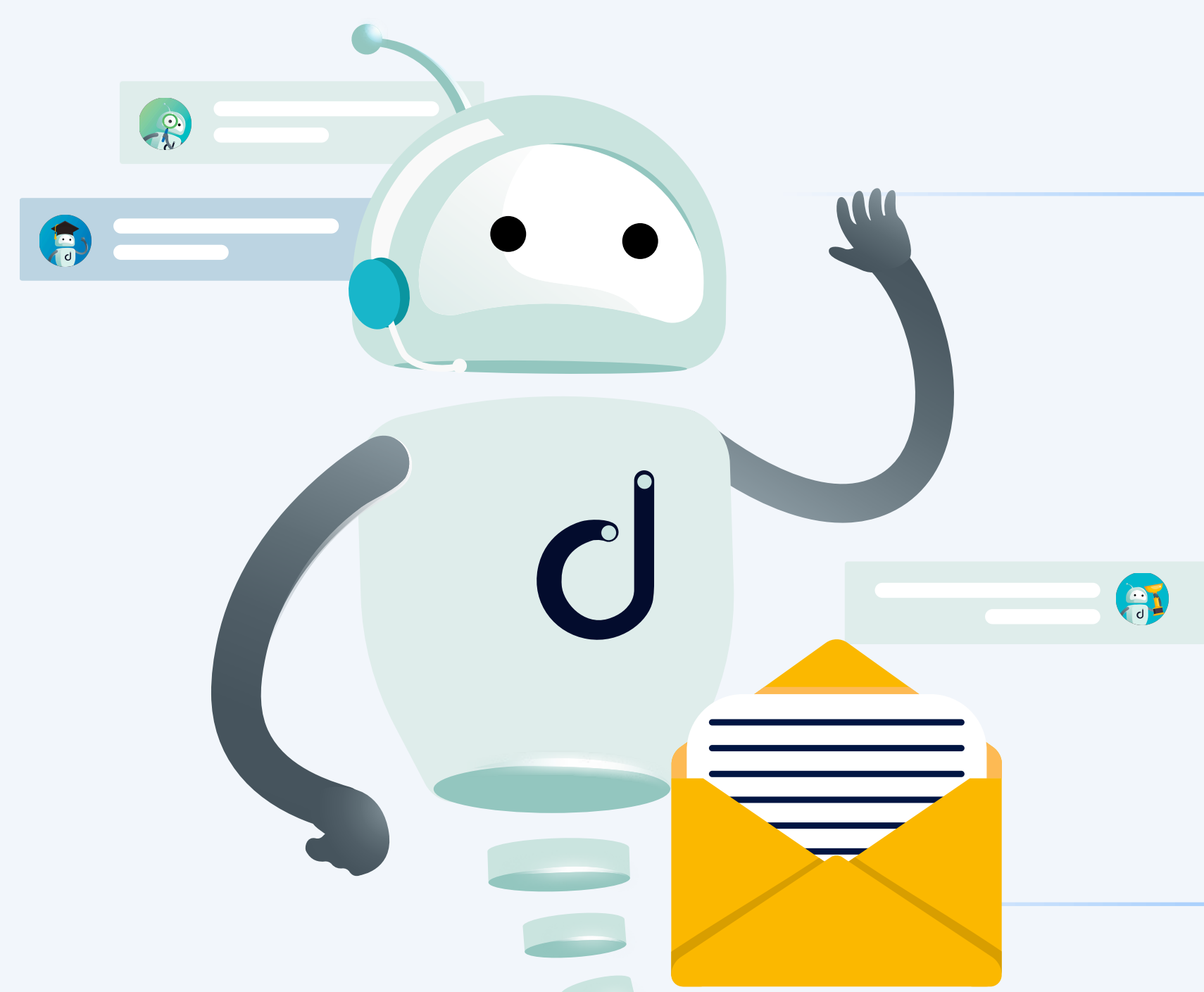


Intelligent Power Management

Remotely manage power for switch ports, UPS, PDUs, and other devices.

See more product features at domotz.com.

The Result? A Happier, More Productive Team.



Joshua Liberman, President & Founder, Net Sciences Inc.

Instead of logging into each appliance to collect and manage information manually, I found it in Domotz. This may be the best tool we have out there.

Ready to Get Started?

Uncover Network Blind Spots Resolve Issues Faster and Easier Exceed Service Delivery Expectations

Start your 14-day
[free trial at domotz.com](https://domotz.com)